



Social Club

Bath & North East
Somerset Council

Improving People's Lives

Annual General Meeting, 20th November 2025

12:30 – 13:30

Kaposvar Room

Supporting BANES Council and Retired Colleagues



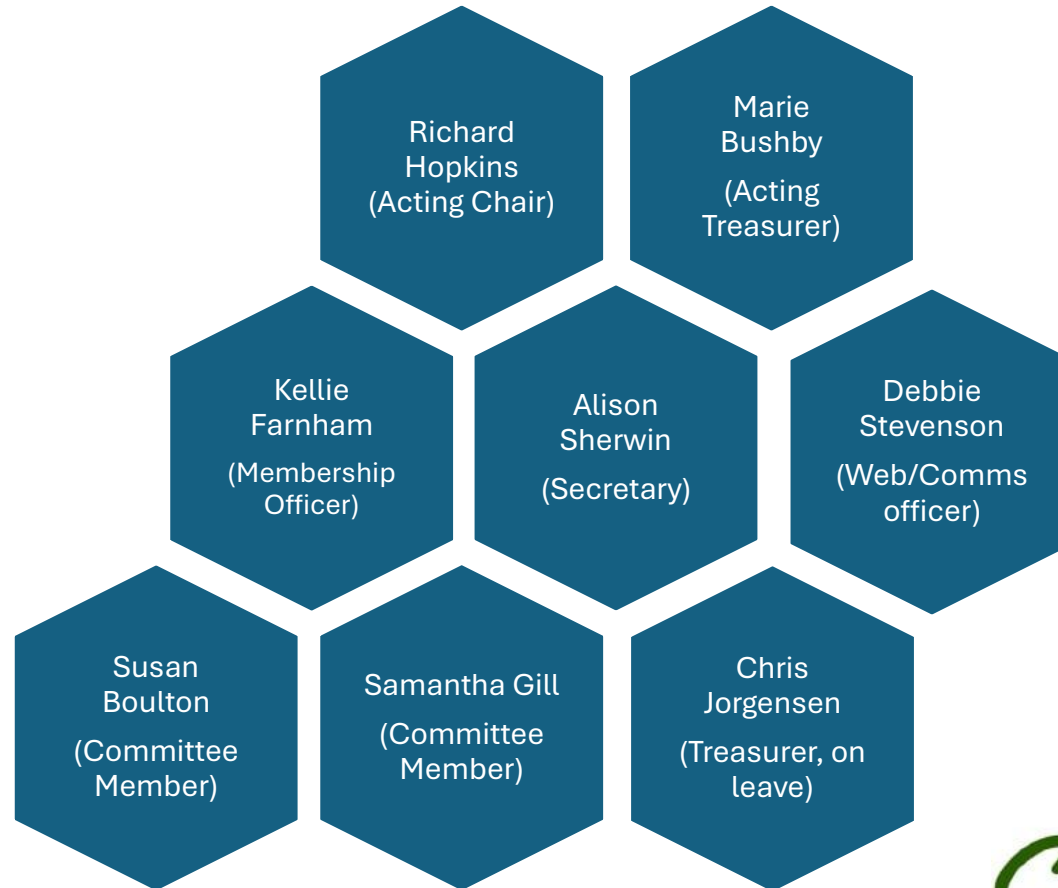
Agenda



Social Club

Topic
Minutes from the previous AGM/Newsletter/Web pages
Review current committee members
Membership Review
Keeping Active
Five-A-Side
Shows Galore
Special Offers
Treasurers Report
Cricket Report
Election of Officers
Questions
Thank you

Committee



Social Club

Membership Summary – October 2025

As of October 2025, the Bath and North East Somerset Social Club has:

403 paying members

237 retired members



Compared to previous years, the number of paying members has slightly decreased from 419 in 2024 to 403, while the number of retired members has increased slightly.

Key points:

The overall trend shows a gradual shift, with a small reduction in active (paying) members and a consistent increase in retired members.

New for 2025 – We now accept membership from council volunteers



Subscription Fees



Last year we agreed to increase the subscription fees to £2.00 per month, as a reminder



Increasing the subscription fee provided us with more opportunities to maintain and enhance discounts for members.



Sustaining discounts: the club can continue offering historic discounts on events, activities, and services, ensuring that members still receive great value for their membership.



Expanding discounts: the extra revenue allows the club to introduce new discounts or expand existing ones, making a wider range of activities more affordable for members.



Secure foundation: offering more, provides us with more opportunity to become an attractive proposition to new members and potentially re subscribe members who may have previously left us.

Let's get Physical

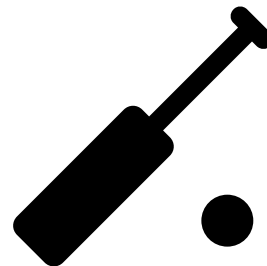
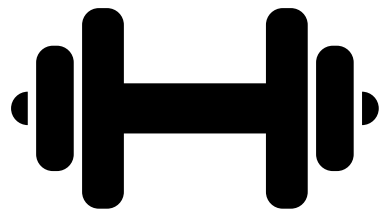


In 2025/2026 we have already supported.

- **Gym membership October 25 to September 2026 – 32 GLL members**
- **Gym membership April 25 to March 2026 – 49 GLL members**

At Dragonfly in Writhlington Social Club members can join at any point in the year for the corporate price **of £300 pa**, they just need a letter to confirm membership

- Five Aside football (please contact Rob for more information)
- Cricket Club (please contact Tom Deller for more information)



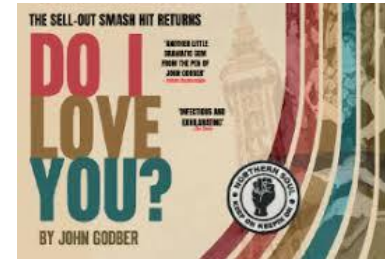
Five-A-Side

- Indoor football is held in the Keynsham Leisure Centre Sports Hall every week at 12:30 - 13:30pm (if enough players are confirmed during the week).
- We are a mixed ability, mixed gender group and generally play either 4 a-side or 5 a-side. We play for fun and friendly competition and welcome all newcomers with open arms as we are constantly looking for new players.
- Costs per session
Sports and Social Club Members: £4
Non-Member: £5.50
- If anyone is interested in joining in they can contact Robin Spalding (Robin_spalding@bathnes.gov.uk) to be added to the weekly mailing list.



Reboot of the 5-A-Side will begin in the new year so watch this space 😊

Theatre Royal - 2025



Jan

Feb

Mar

Apr

May

Jun

Jul

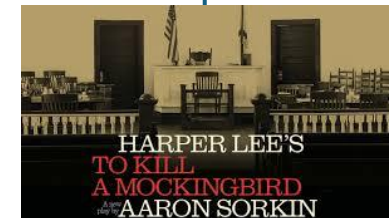
Aug

Sept

Oct

Nov

Dec



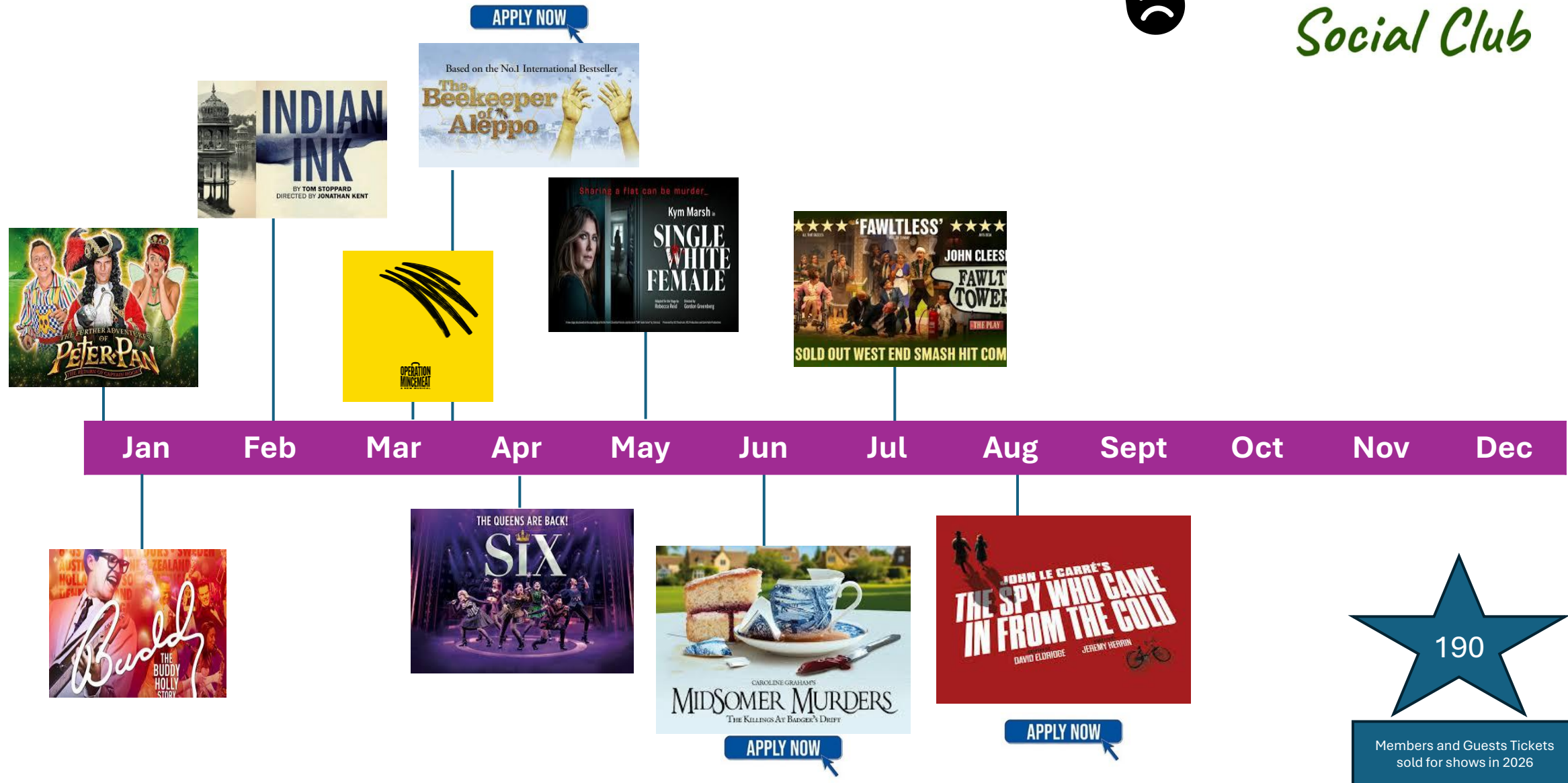
184

Members and Guests Tickets
sold for shows in 2025

Theatre Royal - 2026




Social Club



Bristol Hippodrome 2025



Jan

Feb

Mar

Apr

May

Jun

Jul

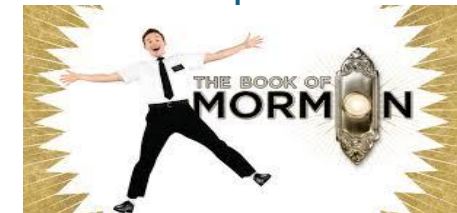
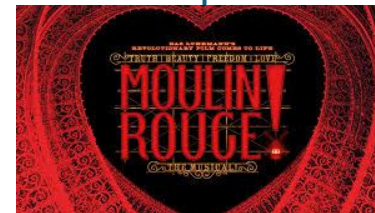
Aug

Sept

Oct

Nov

Dec



270

Members and Guests Tickets
sold for shows in 2025

Bristol Hippodrome 2026



Social Club

APPLY NOW



APPLY NOW



Jan

Feb

Mar

Apr

May

Jun

Jul

Aug

Sept

Oct

Nov

Dec



APPLY NOW

153

Members and Guests Tickets
sold for shows in 2026

Belgium Trip



XMAS SHOPPING & SIGHTSEEING WEEKEND IN

BELGIUM & FRANCE – Friday 28th November – Sunday
30th November (3 days 2 nights)



Special Offers



KOMEDIA - Get 20% off standard auditorium or balcony seats (not including Meal Deal options) on Saturdays. The code is: B&N4BDD when you book. This could be a great idea for a works do or just to blow off some steam after a hard week.

Westonbirt – Trialling new opportunities - The plan for 2025/26 is to offer more opportunities by offering discounts to members that are more of the less traditional Theatre and trips. Starting with refunding any members who book a trip to Westonbirt with £20 per book.



Roman Baths Events – Upcoming in February we have 2 events which you can get a 10% discount for, these are:

Murder Mystery – Friday 20th February uses code **PISTOL**

Silent Disco – Friday 6th February use code **RBATHS0902**

www.bathvenues.co.uk/our-ticketed-events for more info



If any of the Sports and Social club members would like to arrange a show or a trip, please do contact us, we will always support you arranging the trip and don't forget you get a little discount!

Treasurers Report 2024/2025



1. Income

- **Total income:** £69,889

2. Expenditure

- **Total spent:** £64,980

3. Financial Position

- **Surplus this year:** £4,908
- **Funds carried forward:** £31,234

4. Audit and Thanks

- The accounts for 2024–25 have been **independently examined and signed off by Lucinda Dixon**, Audit Manager from One West, who kindly volunteered her time to support us this year.
- **Lucinda stepped in after Andy Cox, our long-standing auditor, retired.**
- On behalf of the club, I would like to express our huge thanks to Lucinda for her support and to Andy for his many years of dedicated support.

Audited accounts 2024/25

(audited and signed copy is now available on the Social Club website)

Income	2021/22	2022/23	2023/24	2024/25	Expenditure	2021/22	2022/23	2023/24	2024/25
£	£	£	£	£	£	£	£	£	£
B&NES Council - Grant	0.00	0.00	0.00	0.00	Printing & Postage	420.51	286.65	272.59	422.89
Membership Subscriptions	6,987.00	7,056.00	7,305.00	7,892.50	Grants (Cricket Club)	250.00	250.00	250.00	250.00
Bank Interest	50.00	0.00	0.00	0.00	Bank Charges	73.00	94.80	106.11	97.40
Annual M'ship				382.00					
Life Membership	240.00	336.00	324.00	432.00					
School 'opt out' membership	105.00	72.00	72.00	61.50					
Curo, HCRG Subs	271.50	234.00	172.50	133.50					
Sub-Total	7,653.50	7,698.00	7,873.50	8,901.50	Sub-Total	743.51	631.45	628.70	770.29
1 Theatre	22,630.25	28,863.00	17,825.39	20,567.50	1 Theatre	24,152.84	49,279.22	18,915.08	20,816.57
2 Excursions	5,104.80	4,520.40	6,119.40	11,636.40	2 Excursions	6,129.00	5,450.00	5,100.00	14,175.00
4 Refunds	608.75	451.50	342.80		3 Refunds	877.55	1,642.75	673.35	678.60
4 GLL Gym M'ship	30,210.00	28,482.00	26,850.00	28,644.00	4 GLL M'ship	24,756.00	27,590.40	29,136.00	27762.00
5 5 A Side Footie		100	284.00	139.50	5 5 A Side Footie	0.00	1,350.00	543.00	740.00
6 Yoga (B&NES Council Activity Grant)	0.00	520	0.00	0.00	6 Yoga	0.00	520.00	0.00	0
					7 Misc (website)	45.90	30.95	75.90	37.95
Sub-Total	58,553.80	62,936.90	51,421.59	60,987.40	Sub-Total	55,961.29	85,863.32	54,443.33	64,210.12
TOTAL	66,207.30	70,634.90	59,295.09	69,888.90	TOTAL	56,704.80	86,494.77	55,072.03	64,980.41
Excess Expenditure over Income	0.00	15,859.87	0.00	0.00	Excess Income over Expenditure	9,502.50	0.00	4,223.06	4,908.49
	66,207.30	86,494.77	59,295.09	69,888.90		66,207.30	86,494.77	59,295.09	69,888.90
Fund Balance b/f	28,459.85	37,962.35	22,102.48	26,325.54	Current A/C	37,962.35	22,102.48	26,325.54	31,234.03
Plus Excess Income	9,502.50	0.00	4,223.06	4,908.49					
Less Excess Expenditure	0.00	15,859.87	0.00	0.00					
	37,962.35	22,102.48	26,325.54	31,234.03		37,962.35	22,102.48	26,325.54	31,234.03

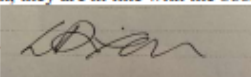
Note:

Statement of the Independent Examiner

I have examined the Income and Expenditure account for the Period ended 30 September 2025.

In my opinion, they are in line with the books and records seen and agreed by myself.

Signed:



14/11/2025

Cricket Club Overview



Social Club

BNES Social Cricket Club 2025.xls Income & Expenditure Account

Income	2022/23	2023/24	2024/25		Expenditure	2022/23	2023/24	2024/25
	£	£	£			£	£	£
Opposition Contribution - Pitch	390.00	115.00	80.00	✓	Pitch Hire	120.00	280.00	310.00
Social Club - Grant	0.00	250.00	250.00	✓	Pitch Contributions (to oppositio	248.00	175.00	227.50
Match Subscriptions	0.00	350.00	415.00	✓	Kit	73.15	83.60	80.74
Net Subscriptions	130.00	0.00	0.00		AGM	135.20	190.00	159.15
Donations **	0.00	0.00	0.00		Awards	0.00	12.00	0.00
AGM Meals	0.00	180.00	117.00	✓	Match Catering	53.00	75.00	30.00
Building Society Interest	130.85	0.00	0.00		Indoor Ners	0.00	0.00	0.00
Refunds	10.00	0.00	0.00					
Match Catering	250.00	0.00	0.00					
Total	910.85	895.00	862.00		Total	629.35	815.60	807.39
Excess Expenditure over Income					Excess Income over Expenditure	281.50	79.40	54.61
	910.85	895.00	862.00			910.85	895.00	807.39

Fund Balance b/f	1255.32	1536.82	1616.22		Building Society / Bank A/C	1,360.99	1,575.39	1,570.00
Plus Excess Income	281.50	79.40	54.61		Petty Cash	175.83	40.83	100.83
Less Excess Expenditure					Plus Debtors			
					Less Creditors			
	1,536.82	1,616.22	1,670.83			1,536.82	1,616.22	1,670.83

Request for £250
grant approved by
Social Club
Committee
November 2025

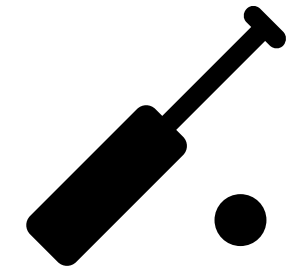


Statement of the Independent Examiner

I have examined the Income and Expenditure account for the Period ended 30th September 2025 and the Balance Sheet as at that date.
In my opinion, they are in line with the books and records seen and agreed by myself.

Signed:
Club Auditor

AR Jones



Election of Officers (Show of hands)



Chair* – Richard Hopkins (Acting)

Treasurer* – Marie Bushby (Acting)

Membership Officer - Kellie
Farnham

Communications Officer & Web
updates – Debbie Stevenson

Secretary – Alison Sherwin

Honorary Auditor - Lucinda Dixon

Your committee members

Susan Boulton

Samantha Gill



* Chris Jorgensen on return from leave
will fulfil role of Treasurer

Meeting Schedule



- We convene via TEAMS on the third **Tuesday** of each month from 12:15 to 13:00.
- Please do not hesitate to contact us at Social_Club@BATHNES.GOV.UK if you are interested in joining our committee. You are more than welcome
- Our Annual General Meeting takes place annually in November.



Social Club





Social Club



To the Committee Members for putting in the effort to keep this going.
Auditors for helping us and you the members, who without we wouldn't have a brilliant Social club.

Thank you for joining us today



Social Club

Season greeting and best wishes
for your health are extended to you
all from the team.



Bath & North East
Somerset Council

Improving People's Lives



Social Club